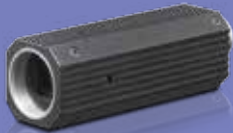


XC-505 XC-505P

Colour Video Camera



XC-505



XC-505P



Features

High-sensitivity Super HAD II CCD

One-piece body and amazingly compact design

22 (H) x 22 (W) x 64 (D) mm, 51 g
(7/8 x 7/8 x 2 5/8 inches, 2 oz)

Selectable video outputs and external synch inputs

- Video outputs: VBS and Y/C
- External synch: HD/VD, VS, VBS (no genlock)

Easy camera setting by dip switch or RS-232C serial communication

Various image acquisition features:

- Selectable Auto Exposure and White Balance
- Defective pixels correction
- 2D/3D Noise Reduction (NR)
- Edge Enhancement/Detail Enhancement
- E-flip
- Built-in colour bar

The XC-505 and XC-505P are ultra-compact and lightweight colour video cameras incorporating a high-sensitivity, high-performance 1/3-type Super HAD II CCD.

Compared to Sony's popular XC-555 camera, the XC-505 and XC-505P are equipped with several new features including one-push white balance, noise reduction (2D/3D), a built-in colour bar, DTL function, and RS-232C support.

These cameras use an NF lens system which can easily be converted into a flexible C-mount lens. What's more, they are simply integrated into space-restricted environments thanks to their one-piece compact and robust body.

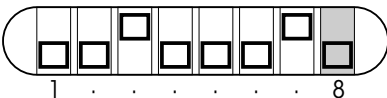
The combination of first-class picture quality with superb sensitivity for less-than-ideal lighting conditions makes these cameras ideal for a wide range of applications such as remote monitoring, security, content creation, machine vision, and sports shooting.

XC-505/505P Specifications

Camera

	XC-505	XC-505P
Image sensor	Super HAD II 1/3-type IT CCD	
Colour filter	Complementary colour mosaic	
Effective picture elements (H) x (V)	768 x 494 pixels	752 x 582 pixels
Scanning system	525 lines, 2:1 interlace, 30 frames/sec	625 lines, 2:1 interlace, 25 frames/sec
Lens mount	NF mount	
Sync system	Internal/External (automatic switching)	
Horizontal resolution	470 TV lines	460 TV lines
Minimum illumination	1.5 lx at F1.4 AGC: max (18 dB)	
Sensitivity	2000 lx at F11 AGC: OFF (0 dB)	
S/N ratio	48 dB (standard) AGC: OFF (0 dB)	46 dB (standard) AGC: OFF (0 dB)
Shutter speed	1/60 sec (OFF) (NTSC), 1/1000 sec, CCD IRIS, and FLICKERLESS (selectable)	1/50 sec (OFF) (PAL), 1/1000 sec, CCD IRIS, and FLICKERLESS (selectable)
White balance	3200K, 5600K, One Push WB, ATW (auto tracing white balance), and MAN (manual) (selectable)	
Gain control	AGC/Fixed (0 dB)	
Video output	VBS/Y/C (selected with the switch) VBS: 1 Vp-p, 75 ohms, sync negative Y: 1 Vp-p, 75 ohms C: C level depends on the composite video out signal	
External synchronous input	HD/VD, VS, VBS (no genlock)	
Output connect	DC IN/SYNC/VIDEO: multi 12-pin	
Operating temperature	0°C to 40°C (32°F to 104°F)	
Storage temperature	-30°C to +60°C (-22°F to +140°F)	
Operating humidity	20% to 80% (no condensation permissible)	
Storage humidity	20% to 90% (no condensation permissible)	
Power requirement	DC 10.5 V to 15 V	
Power consumption	1.5 W	
Vibration resistance	10 G (20 Hz to 200 Hz)	
Shock resistance	70 G	
Dimensions (W x H x D)	22 x 22 x 64 mm (7/8 x 7/8 x 2 5/8 inches)	
Mass	51 g (2 oz.)	
Supplied Accessories	Lens mount cap (1), Tripod adaptor (1 set), Operating instructions (1)	

Dip switches for setting functions

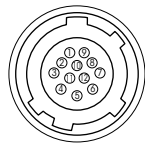


* This Dip switch is the default setting at ex-factory.

Dip switch setting	Functions (Bold: default setting)
1 to 4	White Balance (3.200K, 5.600K, One Push W/B, ATW, Manual)
5 and 6	Shutter Speed (OFF, 1/1,000, CCD IRIS, FLICKERLESS)
7	Auto Gain Control (ON, OFF)
8	Camera Output Signal (VBS, Y/C)

Pin assignment & connector

DC IN/VIDEO connector (multi 12-pin)

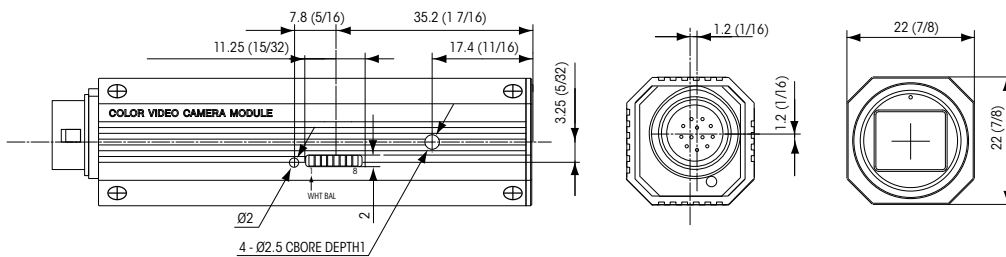


Multi 12-pin Connector

Signal	Sync signal types		
	External Sync signal		Internal Sync signal
Pin No.	HD,VD	VS Input	
1	GND		
2	+12 V		
3	VBS/Y Output (GND)		
4	VBS/Y Output (signal)		
5	HD Input (GND)	-	-
6	HD Input (signal)	-	-
7	VD Input (signal)	VS Input (signal)	-
8	GND (-/C)		
9	-/C Output (signal)		
10	RS-232C (TXD) *		
11	RS-232C (RXD) *		
12	VD Input (GND)	VS Input (GND)	GND

* For details on how to change this setting, please refer to the Technical Manual.

Dimensions (mm)



Distributed by

©2012 Sony Corporation. All rights reserved. Reproduction in whole or in part without written permission is prohibited. Features and specifications are subject to change without notice. The values for weight and dimension are approximate. "SONY", "make.believe" and "Exview HAD CCD II" are registered trademarks of Sony Corporation. All other trademarks are the property of their respective owners.

PHC_27/02/2014

SONY