

## SCORPION IMAGE SENTINEL 2.0

### APPLICATION AREAS

Scorpion Image Sentinel is a professional package for automatic multiple image capture, image storage, data logging and video generation.

It's application area is factory automation. With Scorpion Image Sentinel the production is ready for automatic inspection.



*Capture every little detail with high quality. with high quality cameras*

### FEATURES

The Scorpion Image Sentinel gives extremely valuable functions providing traceability in a production line.

Important features are:

- High speed image capturing
- Synchronized image capturing
- Multiple images of products
- Tagging of images
- Video generation

It records very high quality multiple video streams at up to 30 or more frames per second, with no compression and no loss of frames. Every pixel is recorded and archived, ready for analyses at any time. Any incident in time is recorded, even if it lasts for just 100 milliseconds.

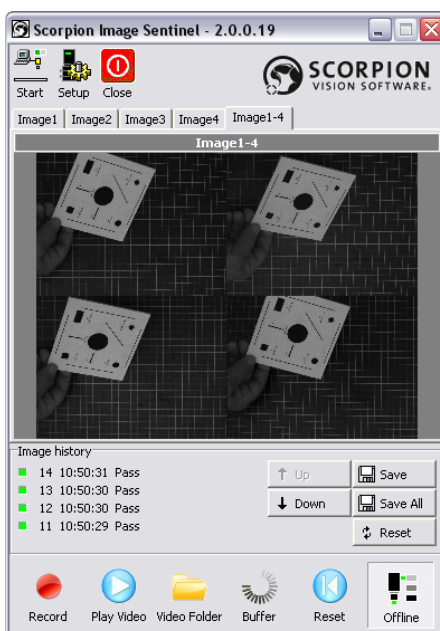
### Scorpion Vision Products

Product no.  
 SVA-2012-0010-Scorpion Image Sentinel





The Scorpion Image Sentinel can be synchronised with the production line and capture images of every produced item. Traceability information like article or product numbers can be stored with the image.

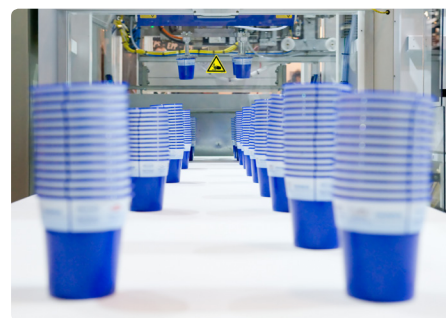
With Scorpion Image Sentinel you know what you have shipped and can use the images for proof to fight claims.

Video can be generated from a production period for incident documentation or to improve the production process.



*The compact Scorpion Image Sentinel user interface.*

-  Record video
-  Play video
-  Manage videos
-  Manage image files



*Document by the use of images.*



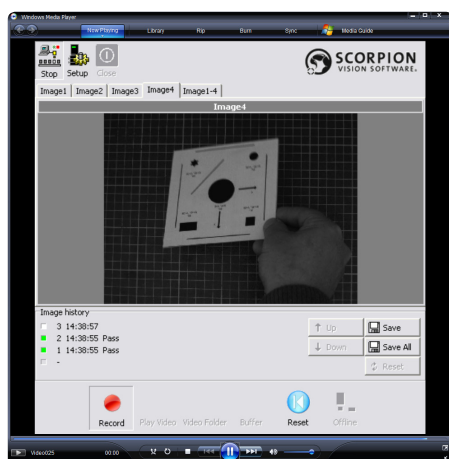
*Sentinel stores images of all products that are shipped.*



*Know what you have shipped.*

## VIDEO INCIDENT DOCUMENTATION

Push a button to create a video from the logged images for incident documentation.

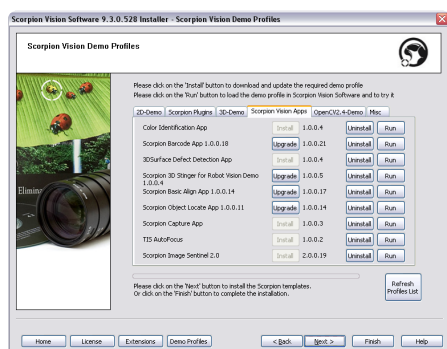


*Video of the logged images.*

## SCORPION INSTALLER

The Scorpion Vision Installer manage the Vision Apps installation. The Installer installs first the complete Scorpion Vision Framework and provides tutorials to learn more about Scorpion Vision and Vision Apps.

The Scorpion Vision Apps are downloaded, installed and updated from the Scorpion Server over the Internet.



*Scorpion Installer*

## AUTOMATION FRAMEWORK

Scorpion Sentinel is development to meet the demanding needs in advanced factory automation. The Vision App is based on the open Scorpion Vision Framework. This means that the app can be customised to solve any Image Capture and Image Storage requirement.

Optional customisations are: OPC interface, SQL-server logging, interface to robots or any PLC.

## IMAGE LOGGING

It is easy to configure image logging with the following features:

- Create stitch images
- Save user selected images
- Images can be automatically deleted

Multiple image storing formats and compression is supported.

Optional conditional image saving based on inputs can be provided together with custom datalogging.

## CAMERA SUPPORT

Scorpion Image Sentinel can interface multiple cameras on a standard PC. We specially recommend:

- Firewire and GigE Area Scan Cameras from Sony

Other cameras and interfaces upon request. Optional: Hardware trigger and tacho support is provided both for Smart, LineScan and AreaScan cameras.



The app specification is subject to change without further notice.



*GigE Area Scan camera from Sony.*

## OPERATING SYSTEM SUPPORT

- Windows XP
- Windows XP Embedded
- Windows 7, 32 bit
- Windows 7, 64 bit

For more information:  
 Tordivel AS  
 Phone +47 2315 8700  
 Fax +47 2315 8701  
[office@tordivel.com](mailto:office@tordivel.com)  
[www.scorpionvision.com](http://www.scorpionvision.com)



Scorpion Vision Software® is a registered trademark of Tordivel AS.  
 © 2012 Tordivel AS